

# Springwell Solar Farm

ES Volume 2: Figures

Chapter 9: Cultural Heritage

APFP Regulation 5(2)(a)

Planning Act 2008

Infrastructure Planning  
(Applications: Prescribed Forms  
and Procedure) Regulations 2009

EN010149/APP/6.2

November 2024

Springwell Energyfarm Ltd



## ES Volume 2: Figures

### Chapter 9 : Cultural Heritage

| Drawing number | Revision number | Drawing title                                 | Scale |
|----------------|-----------------|---|-------|
| Figure 9.1     | 01              | Cultural Heritage Study Area                  | A3    |
| Figure 9.2     | 01              | Heritage assets within the Order Limits       | A3    |
| Figure 9.3     | 01              | Heritage assets within the Study Area         | A3    |
| Figure 9.4     | 01              | Assets included in the Assessment             | A3    |
| Figure 9.5     | 01              | Assets identified from the Geophysical Survey | A3    |
| Figure 9.6     | 01              | Assets identified from the AIM                | A3    |
| Figure 9.7     | 01              | Relative density of Archaeological Features   | A3    |
| Figure 9.8     | 01              | Indicative Archaeological Mitigation Areas    | A3    |



495000E

504000E

513000E

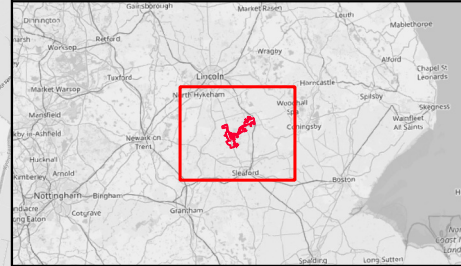
360000N

351000N



**Legend**

- Order Limits
- 2km Study Area
- 5km Study Area



| Rev | Date       | Description    | Drn | Chk | App |
|-----|------------|----------------|-----|-----|-----|
| 01  | 06/11/2024 | DCO Submission | RSK | RSK | EDF |

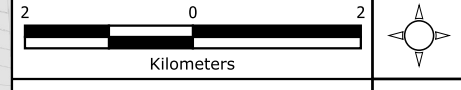
**Springwell Solar Farm**

Coordinate System: EPSG:27700  
Projection: Transverse Mercator  
Datum: EPSG:7001  
Units: meters

DOCUMENT:  
ENVIRONMENTAL STATEMENT  
VOLUME 2: FIGURES  
REGULATION 5(2)(a)

TITLE:  
FIGURE 9.1 CULTURAL HERITAGE STUDY AREA

PINS REFERENCE NUMBER:  
EN010149/APP/6.2



Scale: 1:90000 @A3 REV 01







497000E

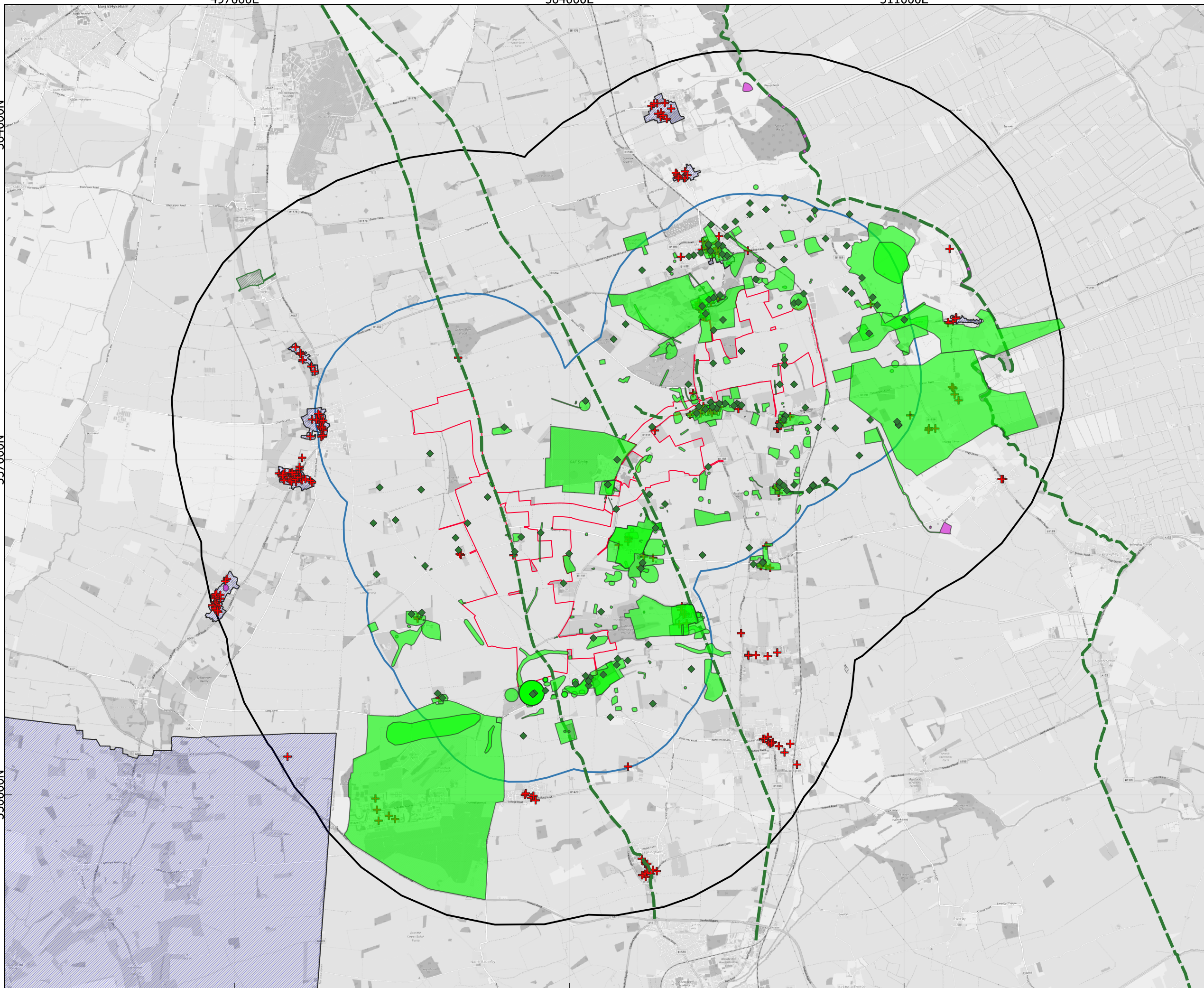
504000E

511000E

364000N

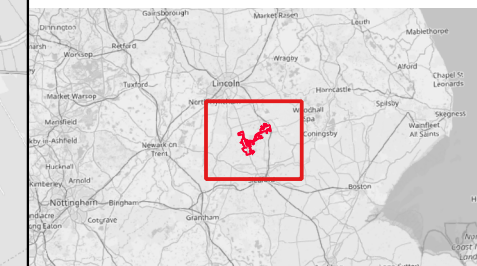
357000N

350000N



Legend

- OrderLimits
- 5km Study Area
- 2km Study Area
- Conservation Area
- + Listed Buildings
- Scheduled Monuments
- Registered Parks and Gardens
- ◆ Non-Designated Monuments point data
- Non-Designated Monuments polygon data
- Non-Designated Monuments line data



| Rev | Date       | Description    | Drn | Chk | App |
|-----|------------|----------------|-----|-----|-----|
| 01  | 07/11/2024 | DCO Submission | RSK | RSK | EDF |

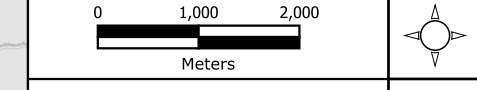
**Springwell Solar Farm**

Coordinate System: EPSG:27700  
Projection: Transverse Mercator  
Datum: EPSG:7001  
Units: meters

DOCUMENT:  
ENVIRONMENTAL STATEMENT  
VOLUME 2: FIGURES  
REGULATION 5(2)(a)

TITLE:  
FIGURE 9.3 HERITAGE ASSETS WITHIN THE STUDY AREA

PINS REFERENCE NUMBER: EN010149/APP/6.2



Scale: 1:75000 @A3 REV 01

Attribution: Contains OS data © Crown copyright and database right (2024). The Historic England GIS Data contained in this material was obtained on 10/09/2024. The most publicly available up to date Historic England GIS Data can be obtained from HistoricEngland.org.uk.  
Lincolnshire HER data obtained 23/07/2024

Path: A:\Consultancy\22-216 Springwell Solar, formerly Acre Lane\1.0 GIS\04 GIS Project\03 GIS Project\22-216 Acre Lane Solar DCO.dwg



497000E

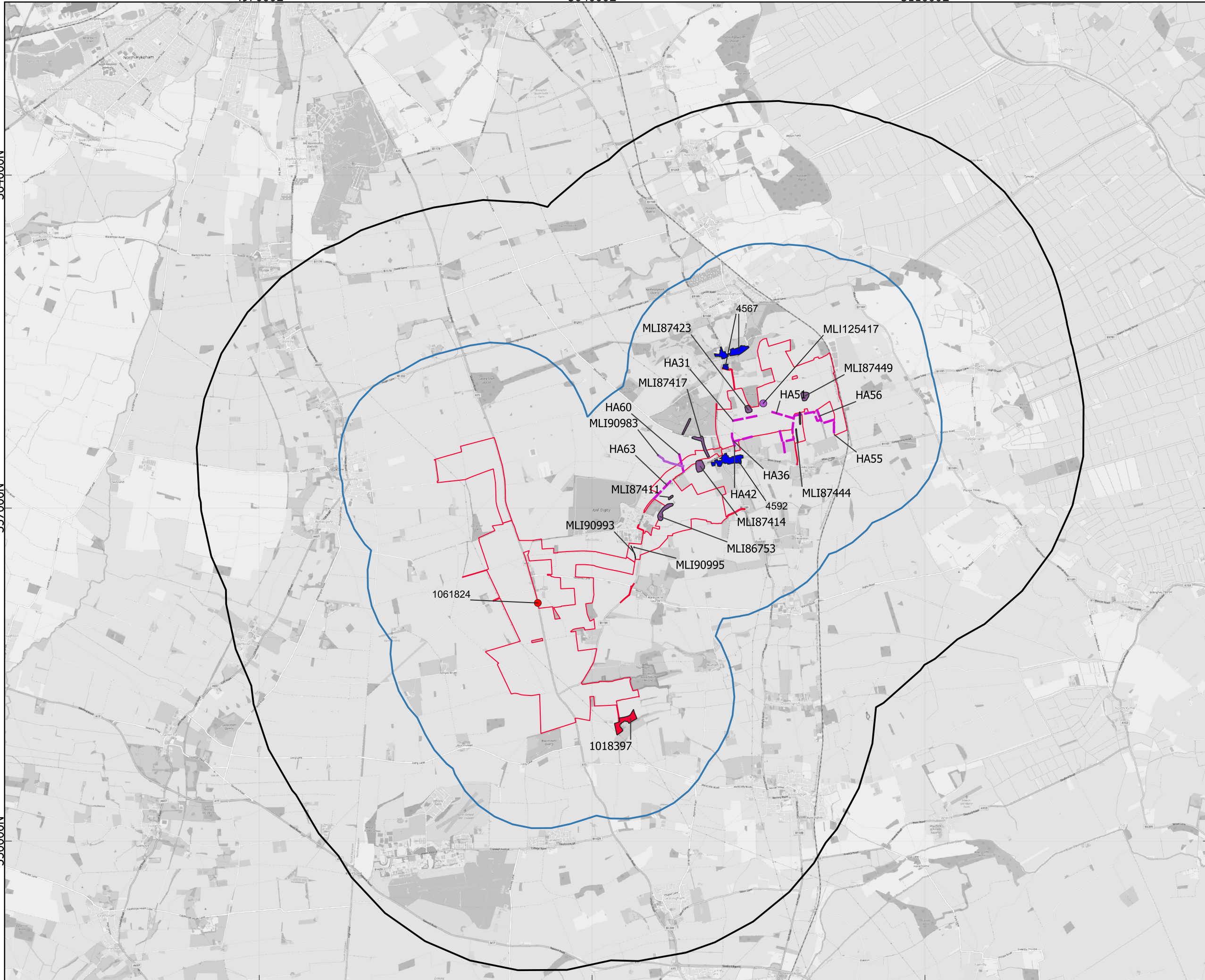
504000E

511000E

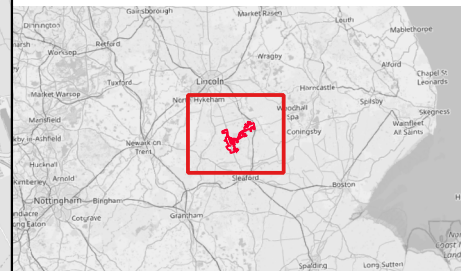
364000N

357000N

350000N



- Legend**
- Order Limits
  - 5km Study Area
  - 2km Study Area
  - Scheduled Monuments
  - Listed Buildings
  - Conservation Areas
  - Monuments (Point)
  - Monuments (Line)
  - Monuments (Polygon)
  - Headland heritage assets



| Rev | Date     | Description    | Drn | Chk | App |
|-----|----------|----------------|-----|-----|-----|
| 01  | 06/10/24 | DCO Submission | RSK | RSK | EDF |

**Springwell Solar Farm**



DOCUMENT:  
 ENVIRONMENTAL STATEMENT  
 VOLUME 2: FIGURES  
 REGULATION 5(2)(a)

TITLE:  
 FIGURE 9.4 ASSETS INCLUDED IN THE  
 ASSESSMENT

PINS REFERENCE NUMBER: EN010149/APP/6.2



Scale: 1:75000 @A3 REV 01

Attribution: Contains OS data © Crown copyright and database right (2024). The Historic England GIS Data contained in this material was obtained on 10/09/2024. The most publicly available up to date Historic England GIS Data can be obtained from HistoricEngland.org.uk.  
 Lincolnshire HER data obtained 23/07/2024

Path: A:\Consultancy\22-216 Springwell Solar, formerly Acre Lane\1.0 GIS\04 GIS Project\03 GIS Project\22-216 Acre Lane Solar DCO.dwg



501000E

504000E

507000E

510000E

360000N

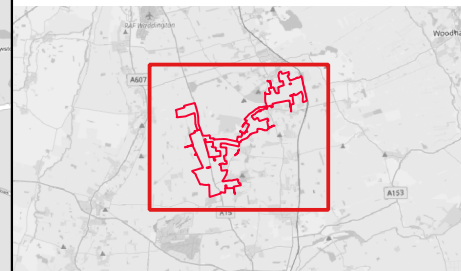
357000N

354000N



Legend

- Order Limits
- Study Area
- 2kmStudy Area



| Rev | Date       | Description    | Drn | Chk | App |
|-----|------------|----------------|-----|-----|-----|
| 01  | 06/11/2024 | DCO Submission | RSK | RSK | EDF |

**Springwell Solar Farm**

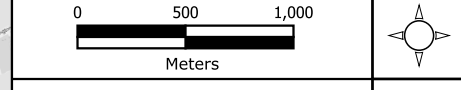
Coordinate System: EPSG:27700  
 Projection: Transverse Mercator  
 Datum: EPSG:7001  
 Units: meters



DOCUMENT:  
 ENVIRONMENTAL STATEMENT  
 VOLUME 2: FIGURES  
 REGULATION 5(2)(a)

TITLE:  
 Figure 9.5: Assets identified from the  
 geophysical survey

PINS REFERENCE NUMBER: EN010149/APP/6.2



Scale: 1:35000 @A3

REV 01



501000E

504000E

507000E

510000E

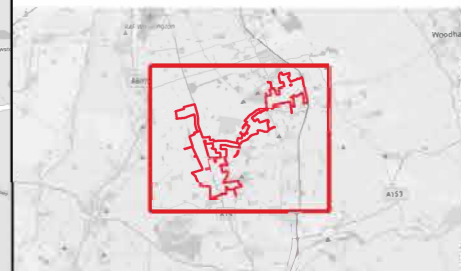
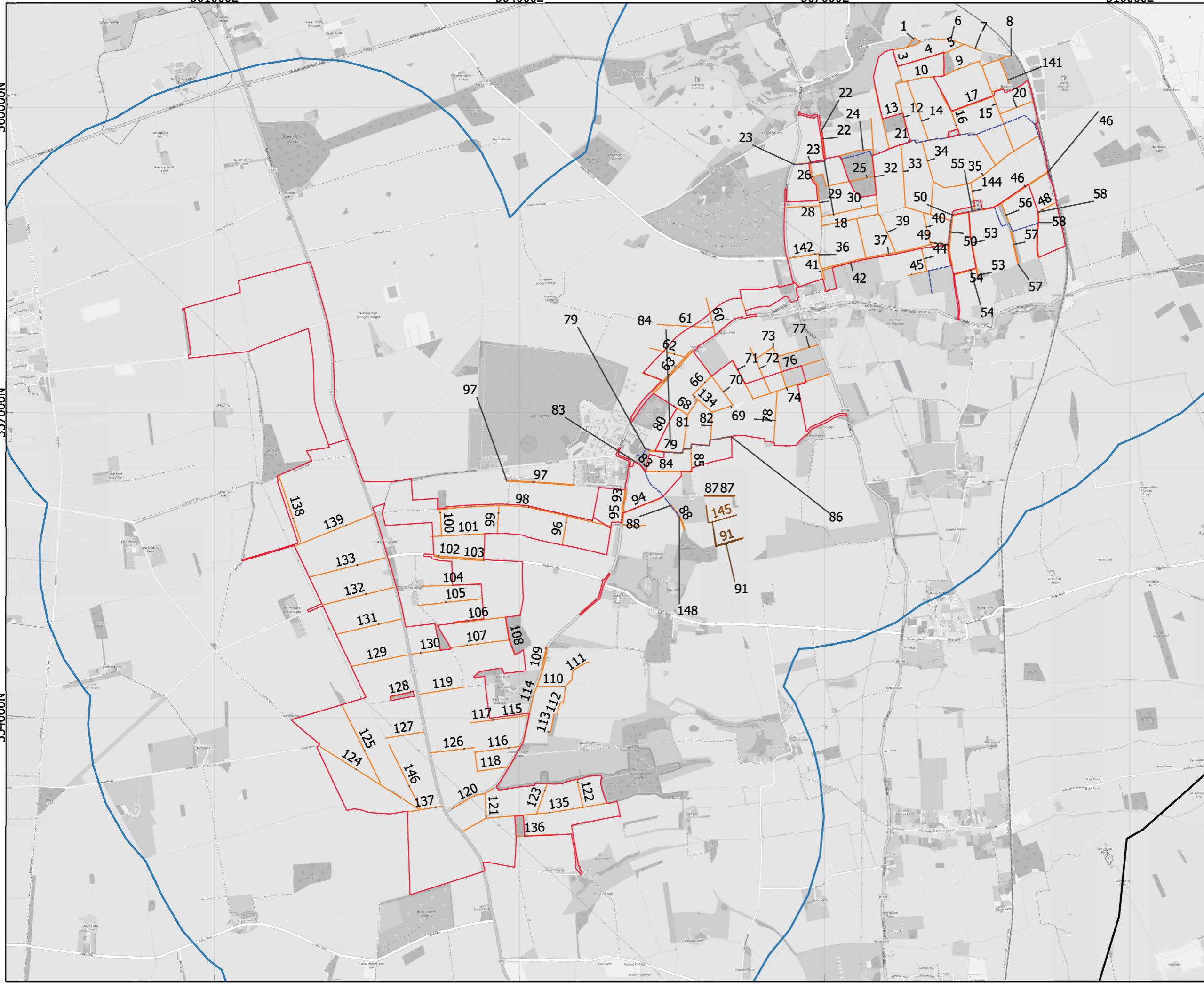
360000N

357000N

354000N

Legend

- Order Limits
- Study Area
- 2kmStudy Area
- Field Boundaries
- Parish Boundaries



| Rev | Date       | Description    | Drn | Chk | App |
|-----|------------|----------------|-----|-----|-----|
| 01  | 06/11/2024 | DCO Submission | RSK | RSK | EDF |

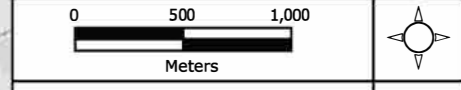
**Springwell Solar Farm**

Coordinate System: EPSG:27700  
Projection: Transverse Mercator  
Datum: EPSG:7001  
Units: meters

**DOCUMENT:**  
ENVIRONMENTAL STATEMENT  
VOLUME 2: FIGURES  
REGULATION 5(2)(a)

**TITLE:**  
FIGURE 9.6: ASSETS IDENTIFIED  
FROM THE AIM

**PINS REFERENCE NUMBER:** EN010149/APP/6.2



Scale: 1:35000 @A3 REV 01

Attribution: Contains OS data © Crown copyright and database right (2024). The Historic England GIS Data contained in this material was obtained on 10/09/2024. The most publicly available up to date Historic England GIS Data can be obtained from HistoricEngland.org.uk.  
Lincolnshire HER data obtained 23/07/2024

Path: A:\Consultancy\22-216 Springwell solar, formerly Acire Lane\10 GIS\06 GIS Project\22-216 Acire Lane Solar DCO.dwg



501000E

504000E

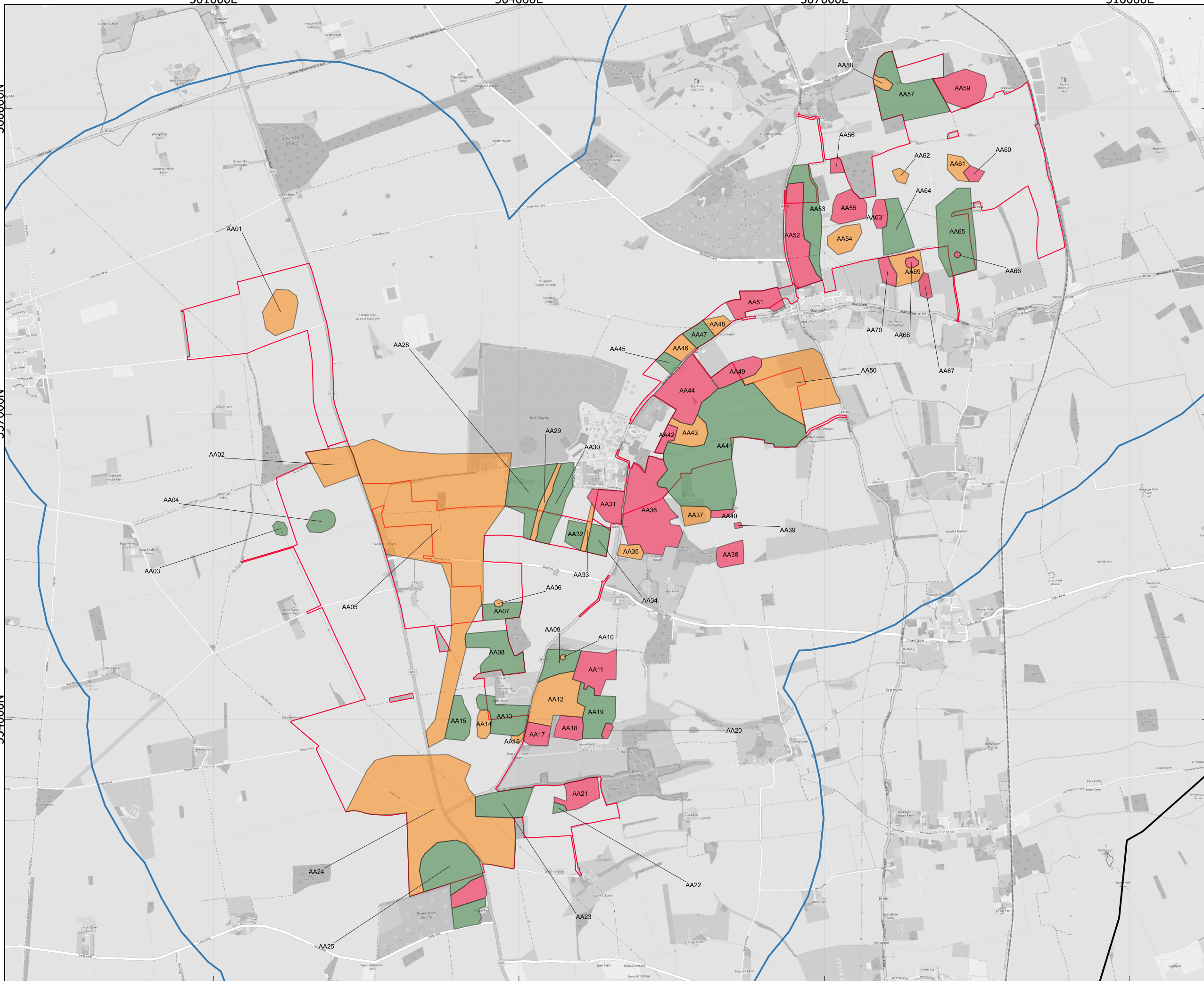
507000E

510000E

360000N

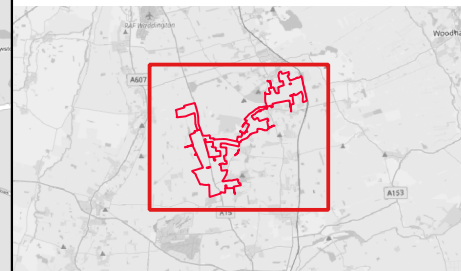
357000N

354000N



Legend

- Order Limits
- Study Area
- 2kmStudy Area
- Areas of Archaeology**
- High Density
- Low Density
- Ridge & Furrow



| Rev | Date       | Description    | Drn | Chk | App |
|-----|------------|----------------|-----|-----|-----|
| 01  | 06/11/2024 | DCO SUBMISSION | RSK | RSK | EDF |

**Springwell Solar Farm**

Coordinate System: EPSG:27700  
 Projection: Transverse Mercator  
 Datum: EPSG:7001  
 Units: meters

**DOCUMENT:**  
 ENVIRONMENTAL STATEMENT  
 VOLUME 2: FIGURES  
 REGULATION 5(2)(a)

**TITLE:**  
 FIGURE 9.7: RELATIVE DENSITY OF  
 ARCHAEOLOGICAL FEATURES

PINS REFERENCE NUMBER: EN010149/APP/6.2



Scale: 1:35000 @A3 REV 01

Attribution: Contains OS data © Crown copyright and database right (2024). The Historic England GIS Data contained in this material was obtained on 10/09/2024. The most publicly available up to date Historic England GIS Data can be obtained from HistoricEngland.org.uk.  
 Lincolnshire HER data obtained 23/07/2024

Path: A:\Consultancy\22-216 Springwell Solar, formerly Acre Lane\10 GIS\04 GIS Project\03 GIS Project\22-216 Acre Lane Solar DCO.dwg

501000E

504000E

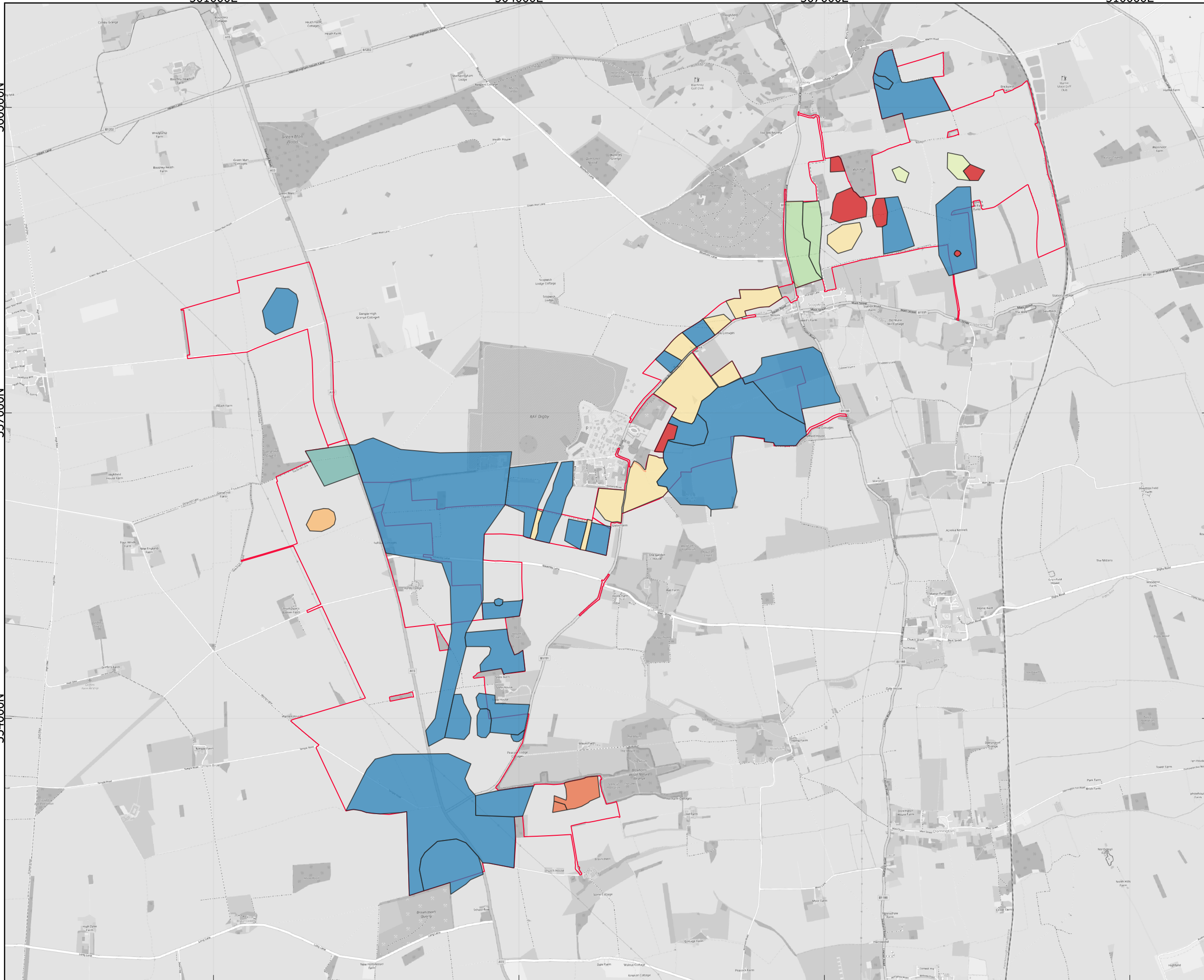
507000E

510000E

360000N

357000N

354000N

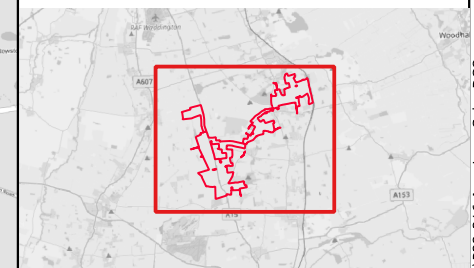


Legend

- Order Limits
  - Study Area
  - 2km Study Area
- MitigationAreas
- preservation in situ - concrete feet
  - preservation in situ - grassland
  - previous trial trenching - no further work proposed
  - targeted excavation - cables
  - targeted excavation - ITS
  - targeted excavation - site access / cables
  - targeted excavation - substation and cables
  - trenching where excavation below 0.3 m proposed in detailed design

Notes:

All areas not identified on this plan for mitigation measure will be subject to further evaluation trenching in line with the outline Written Scheme of Investigation to inform mitigation



| Rev | Date       | Description    | Drn | Chk | App |
|-----|------------|----------------|-----|-----|-----|
| 01  | 06/11/2024 | DCO SUBMISSION | RSK | RSK | EDF |

**Springwell Solar Farm**

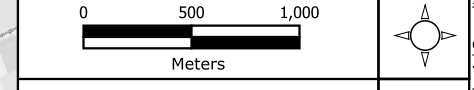
Coordinate System: EPSG:27700  
 Projection: Transverse Mercator  
 Datum: EPSG:7001  
 Units: meters



DOCUMENT:  
 ENVIRONMENTAL STATEMENT  
 VOLUME 2: FIGURES  
 REGULATION 5(2)(a)

TITLE:  
 FIGURE 9.8: Indicative Mitigation Areas for Archaeology

PINS REFERENCE NUMBER: EN010149/APP/6.2



Scale: 1:35000 @A3 REV 01



